

# TRANS-21™ C900 14"-60" SPECIFICATION DATA

Nominal Pipe Size in. (mm)	A Outside Diameter Inches	B Bell Diameter Inches	D Assembly Mark 1: Inches *	E Assembly Mark 2: Inches *	t Minimum Wall Thickness: Inches
<b>DR-14 PRESSURE CLASS 305 PSI</b>					
14" (350)	15.300	19-1/2"	6-7/8"	7-7/8"	1.093
16" (400)	17.400	22"	7-3/4"	8-3/4"	1.243
18" (450)	19.500	24-1/2"	8-1/4"	9-1/4"	1.393
20" (500)	21.600	27"	9"	10"	1.543
24" (600)	25.800	32"	9-3/4"	10-3/4"	1.843
30" (750)	32.000	40"	12-5/8"	13-5/8"	2.286

Prices are subject to a firm policy of "Price in effect at time of shipment on regular purchases" \*Current loading chart from the plant closest to your location can be found by visiting our website, [dpcpipe.com](http://dpcpipe.com) \*Possession of this page does not constitute an offer of sale"

## TRANS-21™

### AWWA C900 LOADING CHART

Nominal Pipe Size in. (mm)	Outside Diameter	Minimum Wall Thickness	Joints Per Bundle	Feet Per Bundle	*Feet Per Truckload
<b>DR-81 PRESSURE CLASS 50 PSI</b>					
36" (900)	38.300	0.473	2	40/44	160/176
42" (1050)	44.500	0.550	2	40/44	160/176
48" (1200)	50.800	0.628	1	20/22	80/88
54" (1350)	57.560	0.711	1	22	44E/88W
60" (1500)	61.610	0.760	1	22	44
<b>DR-51 PRESSURE CLASS 80 PSI</b>					
24" (600)	25.800	0.506	3	60/66	360/396
30" (750)	32.000	0.627	3	60/66	360/396W/264E
36" (900)	38.300	0.751	2	40/44	160/176
42" (1050)	44.500	0.872	2	40/44	160/176
48" (1200)	50.800	0.996	1	20/22	80/88
54" (1350)	57.560	1.128	1	22	44E / 88W
60" (1500)	61.610	1.208	1	22	44
<b>DR-41 PRESSURE CLASS 100 PSI</b>					
20" (500)	21.600	0.527	4	80/88	640/704
24" (600)	25.800	0.629	3	60/66	360/396
30" (750)	32.000	0.780	3	60/66	360/396W/264E
36" (900)	38.300	0.934	2	40/44	160/176
42" (1050)	44.500	1.085	2	40/44	160/176
48" (1200)	50.800	1.239	1	20/22	80/88
54" (1350)	57.560	1.404	1	22	44E / 88W
60" (1500)	61.610	1.502	1	22	44

Prices are subject to a firm policy of "Price in effect at time of shipment on regular purchases" \*Current loading chart from the plant closest to your location can be found by visiting our website, [dpcpipe.com](http://dpcpipe.com) \*Possession of this page does not constitute an offer of sale"

CONTINUED NEXT PAGE



# TRANS-21™

## AWWA C900 LOADING CHART

DIAMOND PLASTICS

Nominal Pipe Size in. (mm)	Outside Diameter	Minimum Wall Thickness	Joints Per Bundle	Feet Per Bundle	*Feet Per Truckload
<b>DR-32.5 PRESSURE CLASS 125 PSI</b>					
16" (400)	17.400	0.535	2\3\4\6	40-132	1,000/1,100
18" (450)	19.500	0.600	4\6	80-132	800/880
20" (500)	21.600	0.665	4	80/88	640/704
24" (600)	25.800	0.794	3	60/66	360/396
30" (750)	32.000	0.985	3	60/66	360/396W/264E
36" (900)	38.300	1.178	2	40/44	160/176
42" (1050)	44.500	1.369	2	40/44	160/176
48" (1200)	50.800	1.563	1	20/22	80/88
54" (1350)	57.560	1.771	1	22	44E / 88W
60" (1500)	61.610	1.896	1	22	44
<b>DR-25 PRESSURE CLASS 165 PSI</b>					
14" (350)	15.300	0.612	6	120/132	1,440/1,584
16" (400)	17.400	0.696	2\3\4\6	40-132	1,000/1,100
18" (450)	19.500	0.780	4\6	80-132	800/880
20" (500)	21.600	0.864	4	80/88	640/704
24" (600)	25.800	1.032	3	60/66	360/396
30" (750)	32.000	1.280	3	60/66	360/396W/264E
36" (900)	38.300	1.532	2	40/44	160/176
42" (1050)	44.500	1.780	2	40/44	160/176
48" (1200)	50.800	2.032	1	20/22	80/88
54" (1350)	57.560	2.302	1	22	44E / 88W
60" (1500)	61.610	2.464	1	22	44
<b>DR-21 PRESSURE CLASS 200 PSI</b>					
14" (350)	15.300	0.729	6	120/132	1,440/1,584
16" (400)	17.400	0.829	2\3\4\6	40-132	1,000/1,100
18" (450)	19.500	0.929	4\6	80-132	800/880
20" (500)	21.600	1.029	4	80/88	640/704
24" (600)	25.800	1.229	3	60/66	360/396
30" (750)	32.000	1.524	3	60/66	360/396W/264E
36" (900)	38.300	1.824	2	40/44	160/176
42" (1050)	44.500	2.119	2	40/44	160/176

Prices are subject to a firm policy of "Price in effect at time of shipment on regular purchases" "Current loading chart from the plant closest to your location can be found by visiting our website, [dpcpipe.com](http://dpcpipe.com)" "Possession of this page does not constitute an offer of sale"

CONTINUED NEXT PAGE

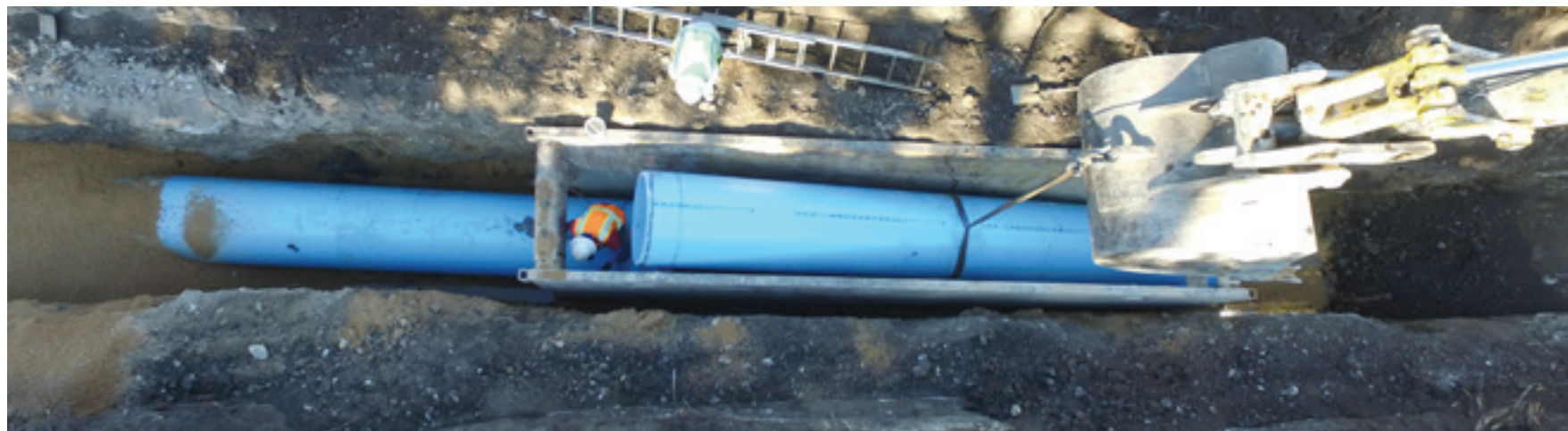
## TRANS-21™

### AWWA C900 LOADING CHART

Nominal Pipe Size in. (mm)	Outside Diameter	Minimum Wall Thickness	Joints Per Bundle	Feet Per Bundle	*Feet Per Truckload
<b>DR-18 PRESSURE CLASS 235 PSI</b>					
14" (350)	15.300	0.850	6	120/132	1,440/1,584
16" (400)	17.400	0.967	2\3\4\6	40-132	1,000/1,100
18" (450)	19.500	1.083	4\6	80-132	800/880
20" (500)	21.600	1.200	4	80/88	640/704
24" (600)	25.800	1.433	3	60/66	360/396
30" (750)	32.000	1.778	3	60/66	360/396W/264E
36" (900)	38.300	2.128	2	40/44	160/176
42" (1050)	44.500	2.472	2	40/44	160/176
<b>DR-14 PRESSURE CLASS 305 PSI</b>					
14" (350)	15.300	1.093	6	120/132	1,440/1,584
16" (400)	17.400	1.243	2\3\4\6	40-132	1,000/1,100
18" (450)	19.500	1.393	4\6	80-132	800/880
20" (500)	21.600	1.543	4	80/88	640/704
24" (600)	25.800	1.843	3	60/66	360/396
30" (750)	32.000	2.286	3	60/66	360/396W/264E

Prices are subject to a firm policy of "Price in effect at time of shipment on regular purchases" \*Current loading chart from the plant closest to your location can be found by visiting our website, [dpcpipe.com](http://dpcpipe.com) \*Possession of this page does not constitute an offer of sale"

CONTINUED NEXT PAGE



DIAMOND PLASTICS

